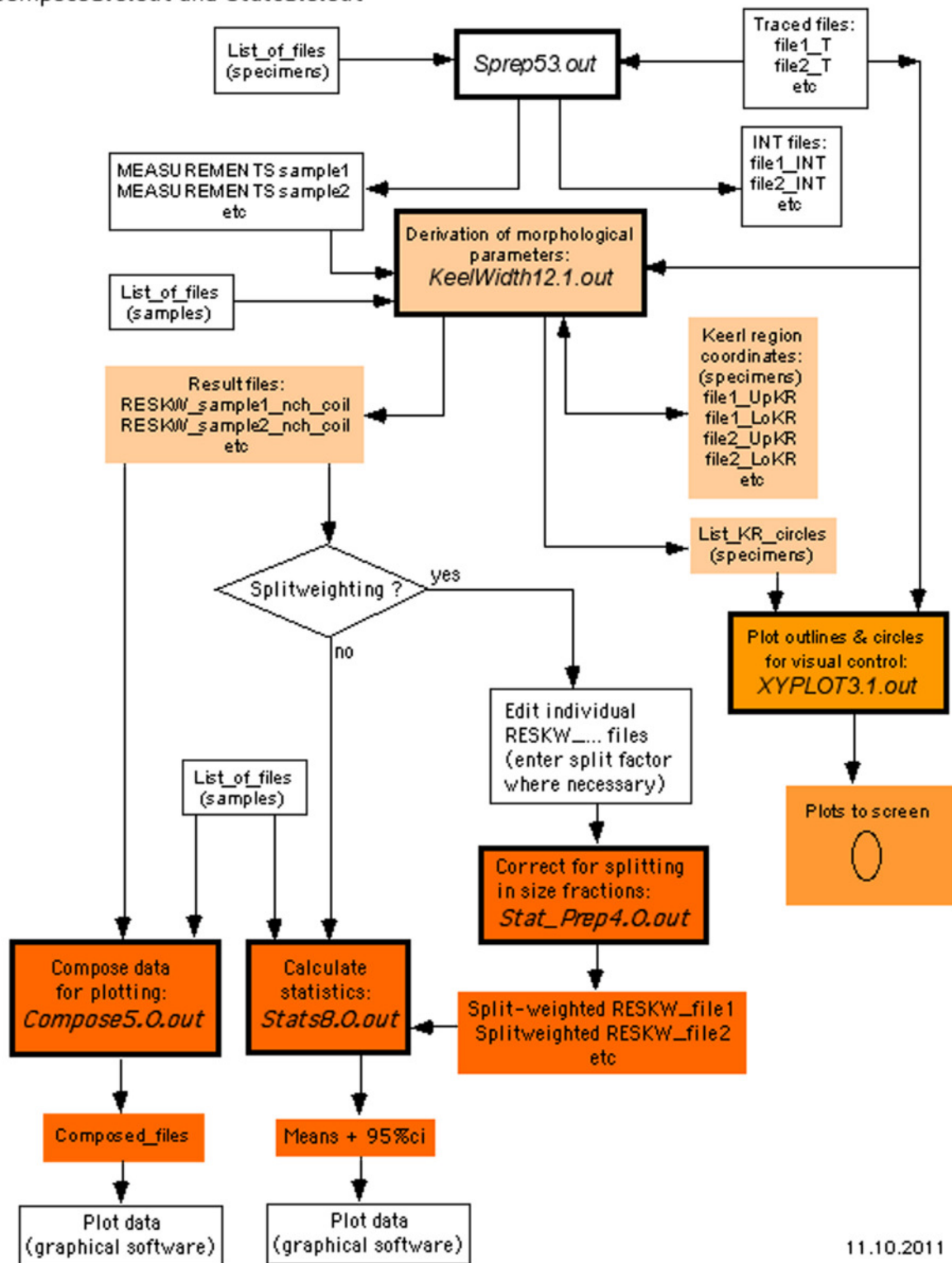


Flow-diagram for the cluster *KeelWidth12.1.out*, *XYPlot3.1.out*, *Stat\_Prep4.0.out*, *Compose5.0.out* and *Stats8.0.out*



11.10.2011

Figure 5d. Flow-diagram for the program cluster *KeelWidth12.1.out*, *XYPLOT3.1.out*, *Stat\_Prep4.0.out*, *Compose5.0.out* and *Stats8.0.out*. *KeelWidth* produces here  $\Phi_3$  angles and the radii of osculating circles in the lower and upper keel regions. For this reason *FitCircle1.3.2.out* is no longer needed any more. *Compose5.out* is to prepare data for plotting and *Stats8.0* is to calculate statistics. *Stat\_Prep* is to compensate for different splits in different size-fractions and is only applied where necessary.